
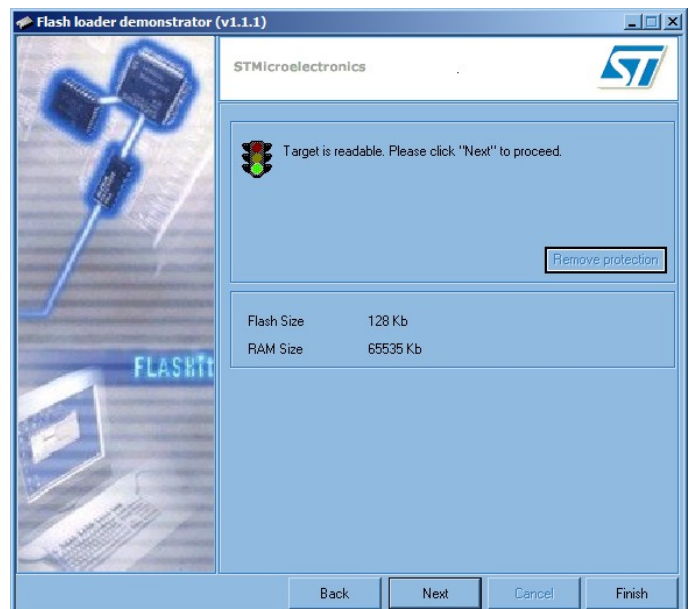
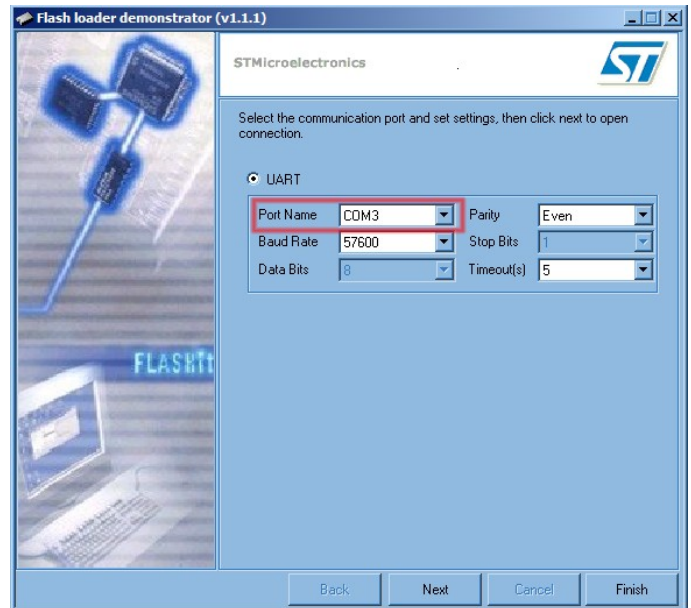


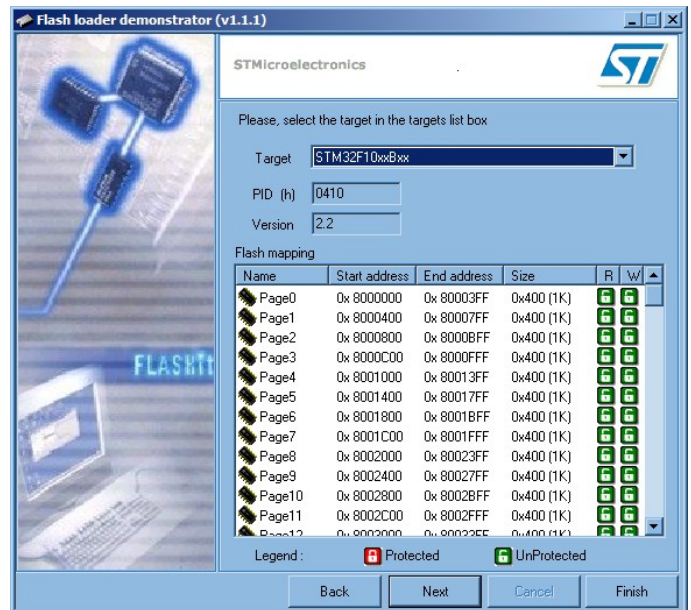
Manual For Flashing OsTech Devices Using STFlash

- disconnect any lasers or TEC from your OsTech device as applicable
- unzip "stflash.zip"
- open a terminal program and connect to your OsTech device (if you use OsTerm, make sure watchers are off)
- enter the command GPROG and press Enter 
- close the terminal program without entering any additional characters
- your device is now in programming mode
- run "STMicroelectronics flash loader.exe"
- the program should look like the image on the right
- select the right COM port that your device is connected to
- leave all other settings at their default values (see image on the right; if you experience problems, you can try lowering the baud rate)
- click "Next"
- the program should detect your device and look like the image on the right
- if the program does not detect your device, please make sure that the device is in programming mode by turning the device off and on and repeating the steps above
- click "Next"

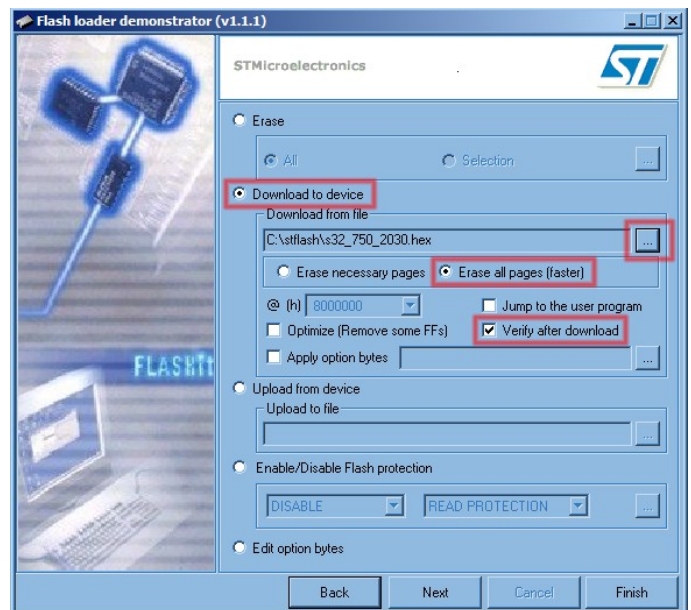


Manual For Flashing OsTech Devices Using STFlash

- you should see the image on the right
- click "Next"



- you should see the image on the right
- select "Download to device"
- click "..." to select the hex file
- in the file open dialog change the file type to HEX and open the appropriate hex file
- select "Erase all pages (faster)" and "Verify after download"
- click "Next"

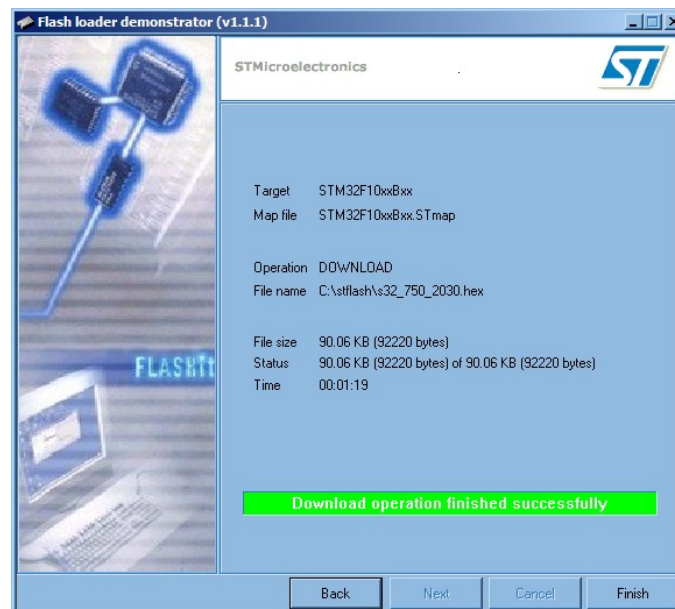


Manual For Flashing OsTech Devices Using STFlash

- now the firmware image is being downloaded to your device
- the program shows the progress and should look like this:



- when the download has finished you will see this:



- click "Finish"
- turn your device off and on
- your device now uses the new firmware