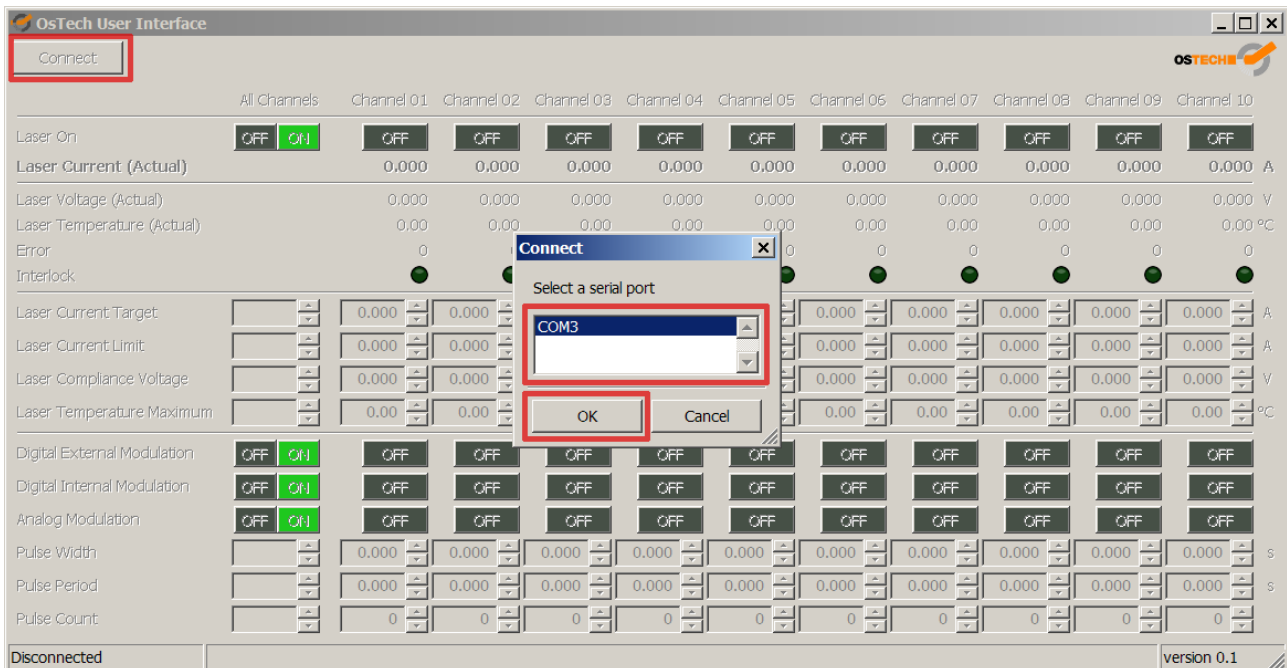
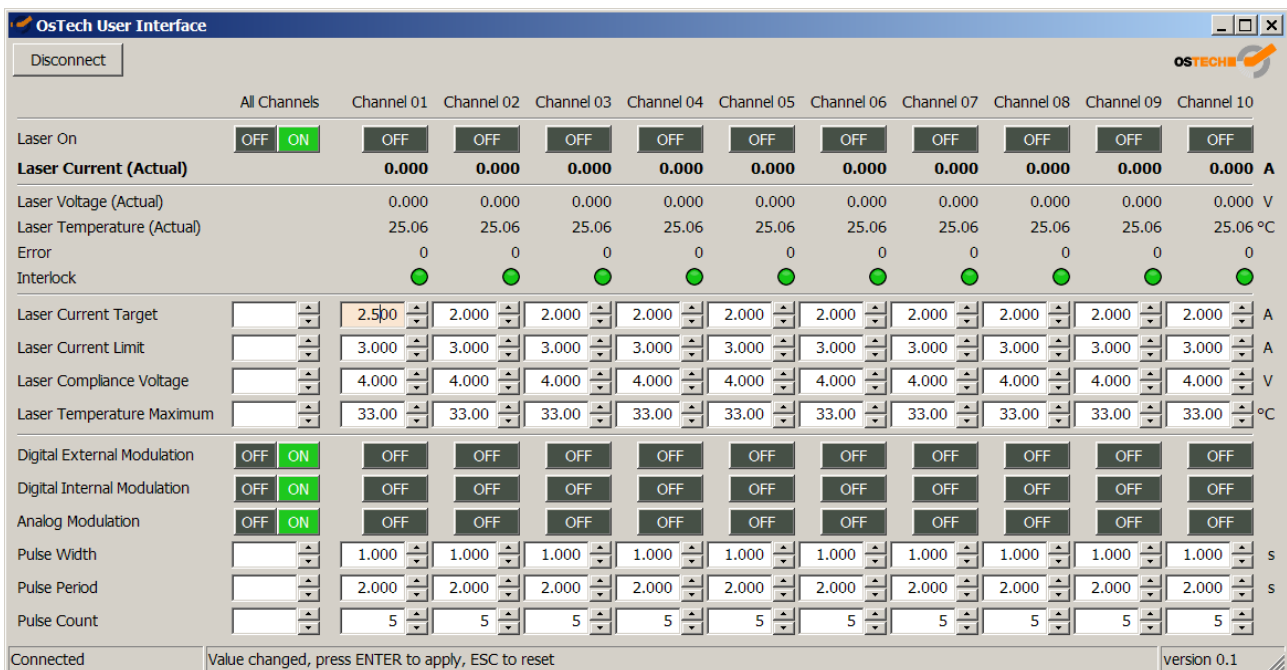


OsTech User Interface

The purpose of this application is to operate and monitor OsTech multichannel devices. There are several versions of this application, each for a different number of channels. This manual describes all these versions. However, the figures show the 10-channel version.



Click on "Connect" to connect the application to the OsTech multichannel device. All found serial interfaces are shown. Select the right one and click "OK".



The columns "Channel 01", "Channel 02" and so on show the current values of the device. They are updated continuously. The ON/OFF buttons also show the current state. Click on a button showing "OFF" to turn the laser or the modulation on and vice versa.

There are fields with values that can be changed. If you select such a field, the background turns blue. This means that the value in this field was not modified. It is still the same value as in the device. As the value is changed, the background turns orange. The changed value can be entered and transmitted to the device by pressing the ENTER key. Press ESC or select another field to abort the modification. The current value in

the device is shown again.

There are several ways to change a value. You can just edit the number in the text field. You can also use the arrows and the mouse wheel to increase or decrease the value. This is done in steps of 0.1. In fields that only accept integer numbers the increment is 1. If you hold SHIFT the increment will double. The CTRL key changes the increment by a factor of 10 and the ALT key by a factor of 100. If you hold several of these keys at the same time the factors are multiplied. So, if you hold CTRL and ALT at the same time the increment is multiplied by 1000.

In the column "All Channels" you can change a value for all channels at the same time. Current values are not shown here. There is a OFF and ON button available for turning all channels off and on respectively. To change a value proceed as described above.

You can use this application in German or in English. Start it with `--lang=de` as parameter for German or with `--lang=en` for English. It is recommended that you edit your link to this application and add the respective parameter. If you start the program without any parameters, the language of your operating system is detected. If it is not German, English will be used.