

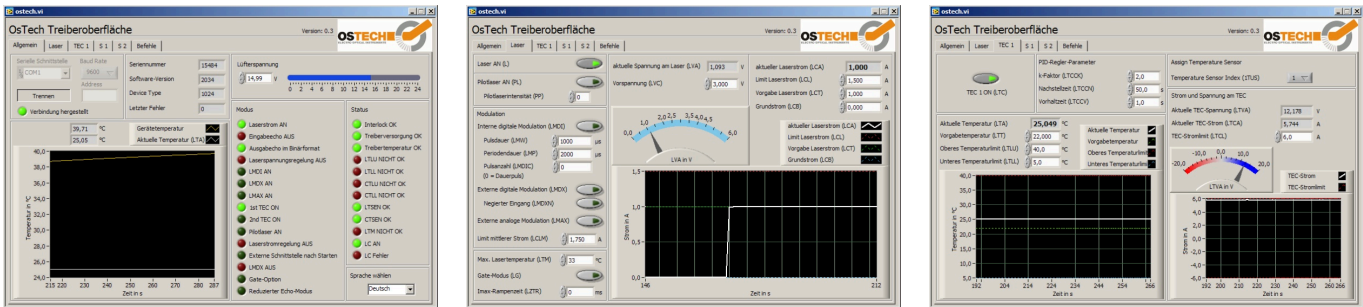
for further information visit:  
**[www.OSTECH.de](http://www.OSTECH.de)**

# About us

OsTech is specialized in the development and production of electronic devices for driving laser diodes and TECs. OsTech provides a modular system, that can supply laser diodes and TECs at different peak current and voltage ranges. All devices offer a great variety of control options at highest precision and safety levels.

Our modules are small in size. The longterm stability and robustness meets very well the requirements of industrial or medical applications. The variety of preimplemented functions and routines which are well adjusted to each other help you to save time and costs.

We can quickly create customized versions: compact or economic versions, special laser modes, drivers for medical devices...



# Features

- fully digital control over RS232 interface
- free LabVIEW™ user interface
- precise current controlled CW and pulsed operation modes
- ajustable driver for pilot laser
- hardware interlock
- temperature protection
- multiple laser safety options
- temperature sensor input for NTC, Pt100, Pt1000 and others
- bias current option for modulation modes
- laser sequencer on request
- overvoltage transient protection
- voltage current and temperature limits

# Products

## Diode Laser Systems

- fiber coupled turn key laser systems
- various wavelengths available
- air or water cooled
- integrated lasers from well-known suppliers
- numerous safety functions
- can be controlled over RS232
- OEM or 19" devices



up to 1000 W optical power

## Laser Drivers

- with up to 3 TEC controllers
- tabletop, OEM and 19" devices
- numerous safety functions
- can be controlled over RS232
- CW and pulse modes



up to 125 A, 64 V

## TEC Controllers

- controls up to 3 TECs
- tabletop and OEM devices
- can be controlled over RS232
- temperature sensor input for NTC, Pt100, Pt1000



up to 600 W

max. 20 A, 48 V

## Heatsinks

- active cooling blocks with TEC
- passive cooling blocks without TEC
- butterfly cooler
- customized laser mounts



passive up to 380 W heat

active up to 150 W heat

## Accessories

- cables
- fiber cables
- thermoelectric coolers
- temperature sensors
- power supplies
- USB-RS232 converter

