



## Diode Laser Systems

- fiber coupled turn key laser systems
- various wavelengths available
- air or water cooled
- integrated lasers from well-known suppliers
- numerous safety functions
- can be controlled over RS232
- OEM or 19" devices



For further information visit our website:

**[www.ostech.de](http://www.ostech.de)**



## Laser Drivers

- with up to 3 TEC controllers
- tabletop, OEM and 19" devices
- multiple laser safety options
- CW and pulse modes
- full digital control over RS232
- free LabVIEW™ user interface
- up to 125 A, 64 V



For further information visit our website:

**[www.ostech.de](http://www.ostech.de)**



## TEC controllers

- controls up to 3 TECs
- tabletop and OEM devices
- temperature sensor input for NTC, Pt100, Pt1000
- fully digital control over RS232
- free LabVIEW™ user interface
- up to 600 W, max. 20 A, 48 V



For further information visit our website:

**[www.ostech.de](http://www.ostech.de)**



## Heatsinks

- active cooling blocks with TEC
- passive cooling blocks without TEC
- butterfly cooler
- customized laser mounts
- passive up to 380 W heat
- active up to 150 W heat



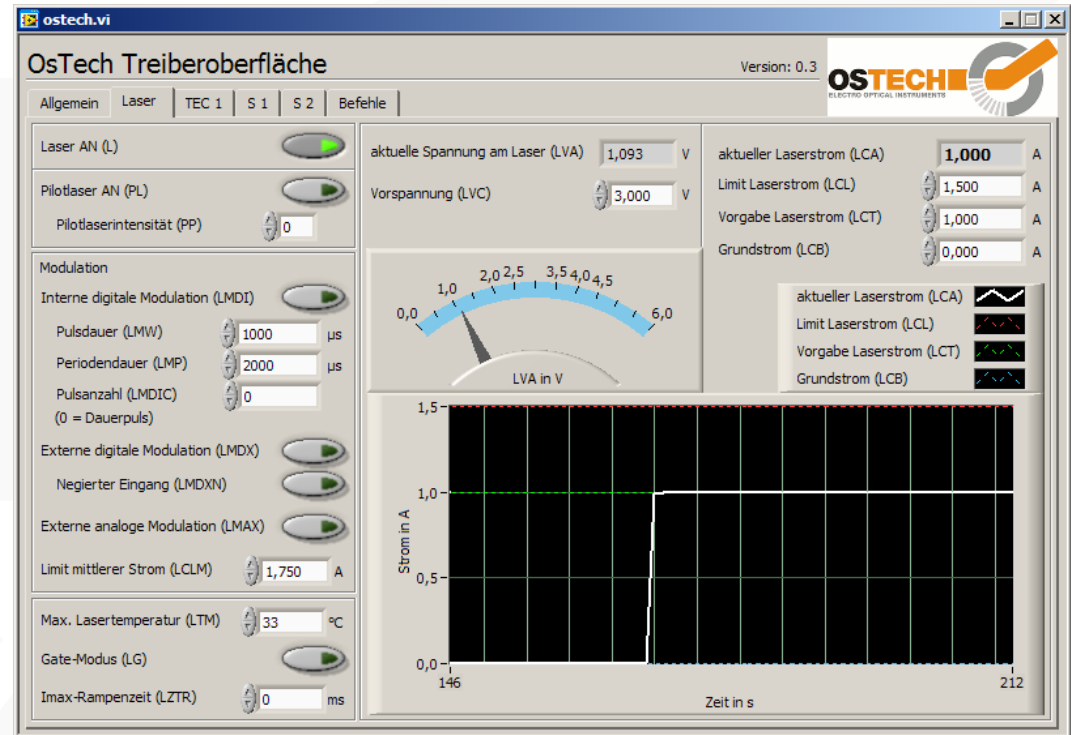
For further information visit our website:

**[www.ostech.de](http://www.ostech.de)**



## LabVIEW™ User Interface

- downloadable for free
- controls OsTech devices via RS232



For further information visit our website:

**[www.ostech.de](http://www.ostech.de)**